

## Secure Rack Modem SRM Series

# Out-of-Band IP Enabled Dial-Up Modem

## 10/100/1000 + FIPS + SNMPv3 + Console Server + 3rd Party Authentication

### Modem Features:

- Secure Dial-Up Rack Modem for Out-of-Band Management
- Hayes™ Standard Modem Commands to TCP/IP or Serial
- Internal Real-time Temperature Sensor with In-Band Alarms
- Out-of-the-Box Ready to Answer on x1 Ring
- Up to 128 User Accounts; Admin, Super & Standard Users

### Security & Authentication:

- HTTPS, SSHv2, SNMPv3
- Transport Layer Security (TLS) v1.2
- IPsec / OpenVPN
- IPtables
- Two-Factor Authentication: RSA® Ready
- AAA: LDAP/Active Directory/Kerberos/RADIUS/TACACS+
- Embedded Validated FIPS 140-2 Cryptographic Module
- Port-Specific Password Protection
- Invalid Access Lockout & Alarm

### In-Band/Out-Band Access:

- 10/100/1000 Base-T Ethernet
- 56K v.92 Internal Modem (RJ45 & DB25 RS232 Serial Ports)
- Local Access (RJ45 RS232 & USB Mini SetUp Ports)
- Network Accessible Dial-Up Modem for Remote Users
- Supports both IPv4 and IPv6

### IP-to-Serial Console Features:

- Ctrl+Break Command Block Options
- SSH/Telnet/Raw-Socket TCP Connection
- Control Modem Over SSHv2 and Initiate Out-Bound Data Calls
- Reverse/Outbound SSH

### Event Monitoring, Logging and Notification:

- Over-Temperature Alarms
- Ping-No-Answer Alarm (Failed Ping Command)
- Invalid Access Lockout and Alarm
- Power Cycle Alarm
- No Dialtone Alarm with Dry Contact Option
- Alarms via SNMP, Email or Text Message
- SYSLOG Reporting of Admin-defined Activities + Local Logs (Admin Only)
- Temperature Logging, User Activity Logging and Event Logging Capabilities
- Time Stamped Log Records

### Unit Management:

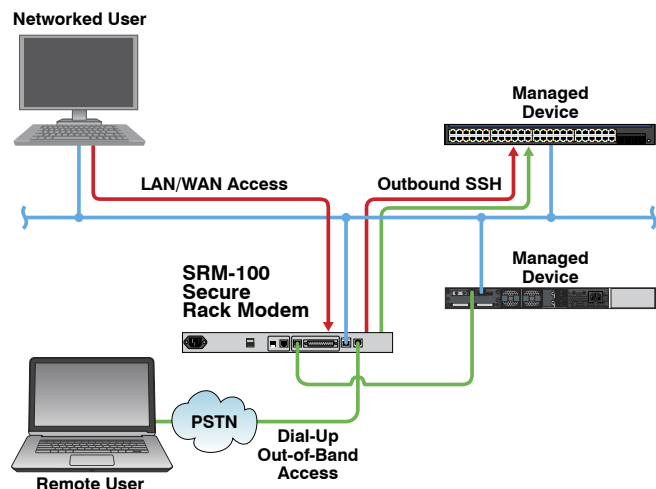
- RESTful Web Services API
- DHCP/FTP/TFTP/SFTP/SCP
- CLI & Web-Based GUI
- Compatible with WMU Enterprise Management Software
- Multiple Concurrent SSHv2 Sessions
- Full MIB Support
- NTP for True Server Sync



### SRM-100 (100-240VAC) Secure Rack Mount Modem For Out-of-Band Management

The SRM-100 is a secure, 19" rack-mounted modem, designed to provide NOC support technicians with a convenient solution for out-of-band, dial-up access to equipment located at remote sites or branch offices. In-bound data sessions are protected by third party authentication or local usernames and passwords. Support personnel can access the SRM-100 via LAN/WAN using SSHv2 and then initiate dial-up, out-of-band connections to remote devices, allowing billing for OOB management sessions to be accounted for from one location. The SRM-100 can also log user activity to track in-band and out-of-band connection activities.

The unit includes an on-board, 10/100/1000 Ethernet port to provide in-band access to configuration and management capabilities, and also allow the SRM to function as a single-port terminal server. The SRM features a robust, self-adjusting power supply which can be used in 115/208/220 VAC environments. In addition, DC powered models are available for Telco applications and can be configured for 48 VDC or 24 VDC. For information regarding custom modifications, please consult your WTI sales engineer.





# Secure Rack Modem SRM Series

<b>Specifications:</b>	
<b>Ethernet Port:</b>	10/100/1000 BaseT, RJ45, multi-session.
<b>SetUp Ports:</b>	One (1) RJ45 Connector (DTE Pinout) One (1) USB Mini Connector
<b>Modem:</b>	56K v.92 Internal Modem with Dialback Security
<b>Modem Ports:</b>	One (1) RJ45 Connector (DCE Pinout) One (1) DB25 Connector (DCE Pinout)
<b>Phone Line Port:</b>	One (1) RJ11 for connection to Telco Line
<b>Operating Temperature:</b>	32°F - 122°F (0°C - 50°C)
<b>Power:</b>	SRM-100 Models: IEC-320-C14 Inlet, 100 to 240 VAC, 50/60 Hz, 0.2 Amp Max. SRM-100DC Models: Terminal Strip (#6-32,) -48 VDC 0.3 Amp Max.
<b>Humidity:</b>	10 - 90% RH
<b>Size:</b>	Height: 1.75" (4.4 cm), 1 Rack U Width: 19.00" (48.3 cm) Depth: 4.6" (11.7 cm)
<b>Shipping Weight:</b>	4 Lbs (3.6 Kgs)
<b>Mounting:</b>	19" Rack Brackets Included
<b>Approvals:</b>	UL, cUL, CE, FCC Class A

## Secure, Authenticated, Dial-Up OOB

Dial-up access is protected by callback security and a user directory that provides individual passwords, callback numbers and access privileges for up to 128 accounts. Network access to the SRM-100 is protected by authentication protocols such as LDAP, TACACS+, Kerberos and RADIUS, plus security features such as HTTPS/SSL/TLS secure web, IP Address filtering and a FIPS 140-2 cryptographic module.

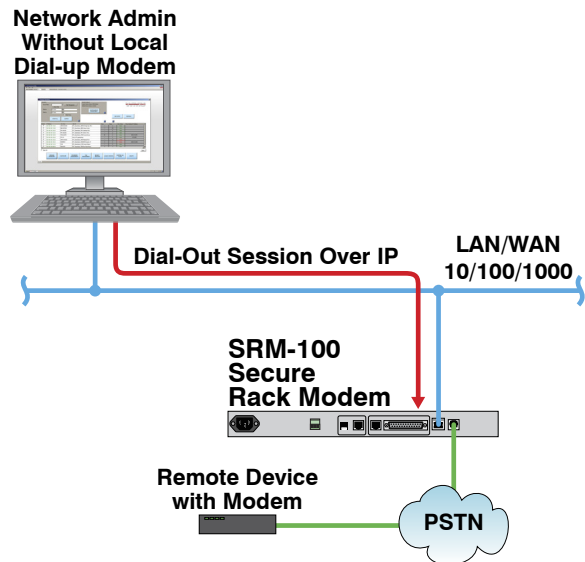
## Network Accessible Shared Modem

In addition to providing a secure, dial-up solution for OOB communication, the SRM-100 also includes a 10/100/1000Base-T Ethernet Port, to allow configuration of modem functions via network and also permit the SRM-100 to serve as a network accessible external modem for users who lack access to an internal modem. Support for reverse/outbound SSH/Telnet allows users to easily establish secure connections with other devices on your network.



**SRM-100DC (-48VDC)**  
Secure Rack Mount Modem For Out-of-Band Management

- ✓ 5 Year Warranty
- ✓ Stocked for Same Day Shipments
- ✓ In-House Design & Manufacturing
- ✓ Made In USA



Visit [www.wti.com](http://www.wti.com) For More Info

**Toll Free:** (800) 854-7226      **Direct:** (949) 421-4199      **FAX:** (949) 583-1320

