

Network Based Rack Mount Power Control

**Control Power to
Any AC Powered Device
via Browser, Telnet, External
Modem or Local Terminal**



Applications:

- Remote Power Management and Control
- Reboot Servers, Routers, Switches, Web Cams, Firewalls and Other Remote Devices

Features:

- Web Browser Access for Easy Setup and Operation
- Encrypted Password Security
- On / Off / Reboot Switching
- IP Addressed, 10Base-T Interface
- RS232 Modem / Console Port
- Network Security Features
- Four Individual Switched Outlets
- Rack mount hardware included
- 115 VAC and 230 VAC Models

Servers, routers, and other electronic equipment sometimes "lock-up," often requiring a service call to a remote site just to flip the power switch to perform a simple reboot. The IPS-400 Internet Power Switch gives you the ability to perform this function from anywhere; just point your browser to the IPS's TCP/IP address, enter the secure user name and password, and you're just a click away from remote power On, Off or Reboot!

Two Convenient User Interfaces

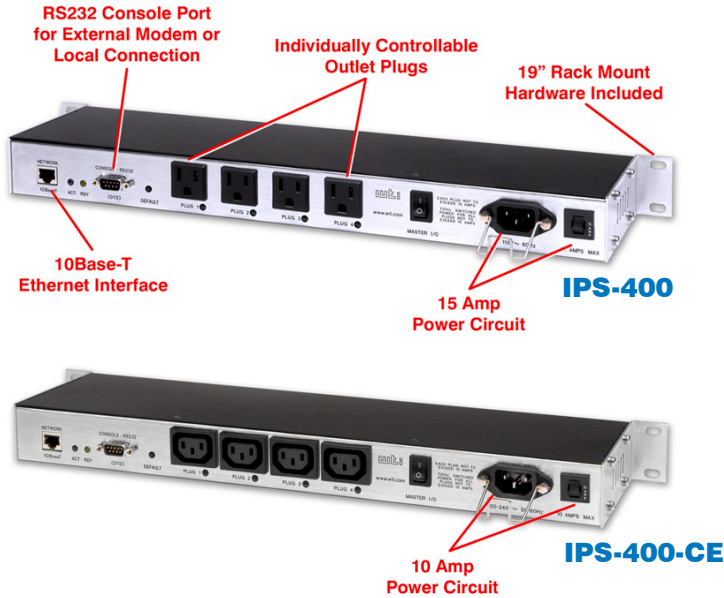
The IPS-400 provides two convenient methods for accessing configuration and control switching functions; The Web Browser Interface and the Command Line Interface.

The Web Browser Interface consists of a series of simple, easy-to-use web page menus that allow you to select configuration parameters or initiate switching operations using your TCP/IP network and a JavaScript enabled web browser.

The Command Line Interface is an ASCII menu system, which allows you to configure and operate the IPS via telnet over TCP/IP network, via external modem connection or via local PC using a terminal program such as Hyperterminal or TeraTerm.



IPS-400 / IPS-400-CE Remote Power Management Switches

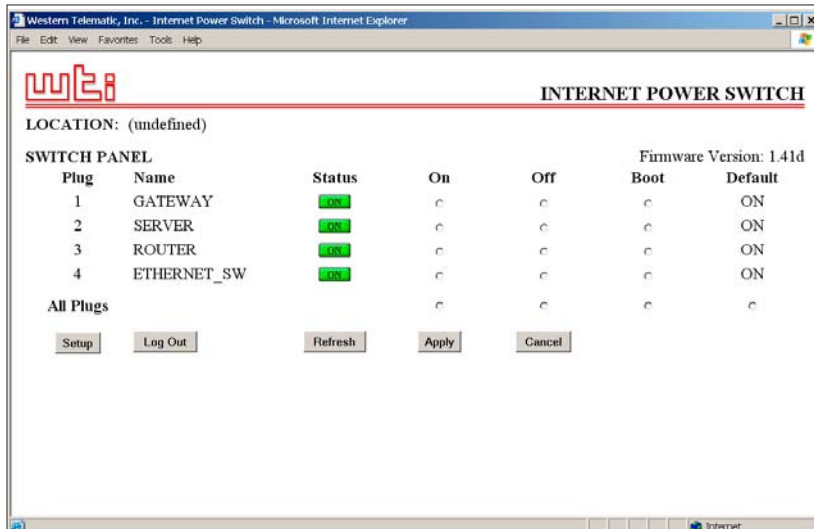


Security and Co-Location Features

Access to the IPS-400 command mode is password protected to prevent unauthorized users from invoking sensitive switching and configuration functions. Both the Web Browser Interface and Command Line Interface require the user to enter a password before allowing access. Passwords transmitted via web browser use 64-bit encryption techniques to ensure that passwords remain protected and access to your equipment remains secure. Telnet control can be user-defined to a discrete TCP port, or completely turned off to ensure that no unprotected port is present.

The IPS-400 also features two different levels of operational passwords; the System Administrator Level and the User Level. The Administrator Level provides access to all configuration and switching functions, while the User Level is limited to switching functions only. Each outlet can have a unique User Level password.

System Status Screen



Specifications

Power Input/Output (IPS-400):

- Voltage:** 100 - 120 VAC, 50/60 Hz
- AC Input:** 15 Amps Maximum
- AC Inlet:** IEC-60320-C14
- AC Outlets:** Four (4) NEMA 5-15 Outlets
- Current Load:** 15 Amps Max. (Total)

Power Input/Output (IPS-400-CE):

- Voltage:** 208 - 240 VAC, 50/60 Hz
- AC Input:** 10 Amps Maximum
- AC Inlet:** IEC-60320-C14
- AC Outlets:** Four (4) IEC60320-C13 Outlets
- Current Load:** 10 Amps Max. (Total)



Physical/Environmental:

- Size:**
 - Width:** 19.0" (48.2 cm)
 - Depth:** 4.25" (10.8 cm)
 - Height:** 1.75" (4.5 cm) one rack U

Weight: 10 lbs (4.5 Kg) Shipping Weight

Operating Temperature: 32°F to 122°F (0°C to 50°C)

Humidity: 10% to 90% RH

Agency Approvals:  

Control Ports:

- Ethernet Port:** 10Base-T
- Console Port:** DB-9M, RS-232C
- RS232 Coding:** Serial ASCII, 7/8 Bits, 300-38.4 Kbps.



western telematic incorporated

5 Sterling • Irvine • California 92618-2517

TOLL FREE (800) 854-7226
 TEL (949) 586-9950
 FAX (949) 583-9514
 EMAIL info@wti.com
 WEB www.wti.com