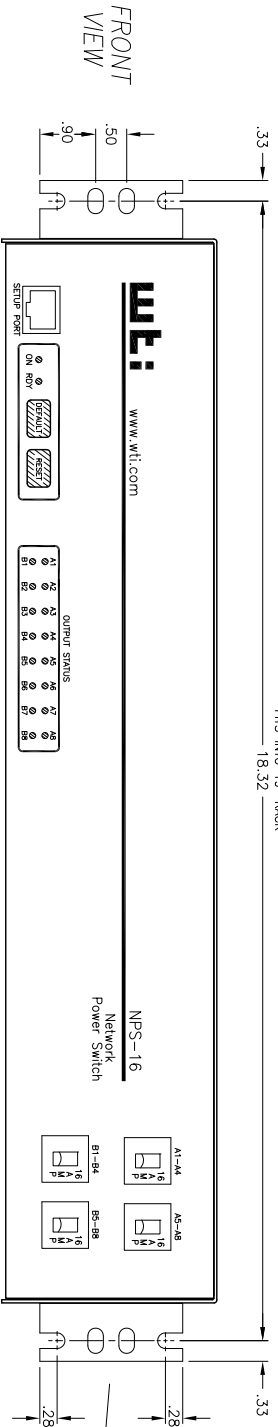
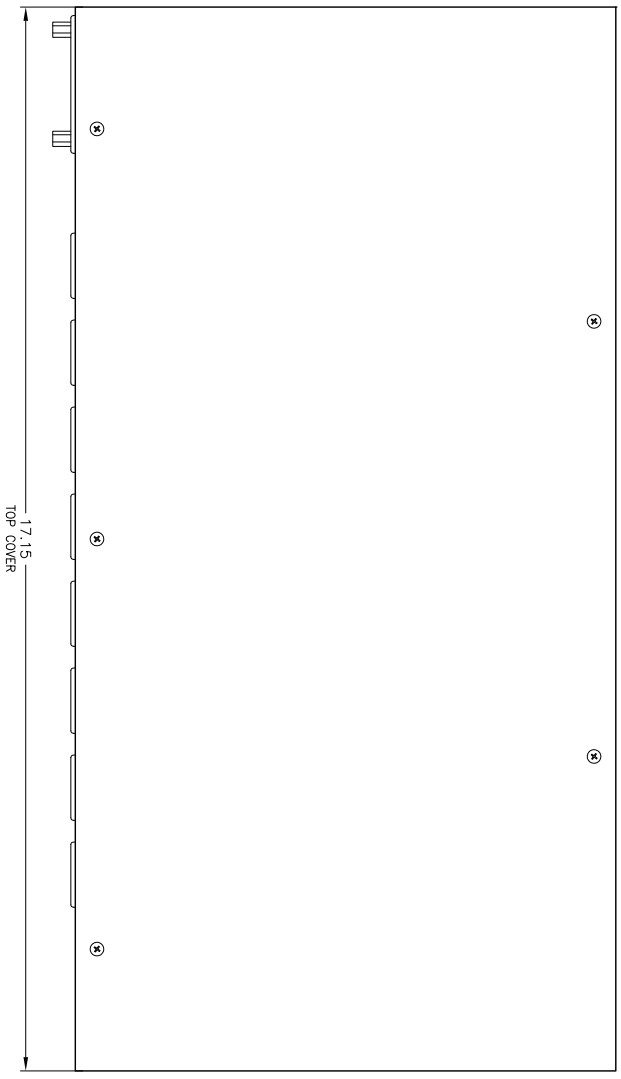


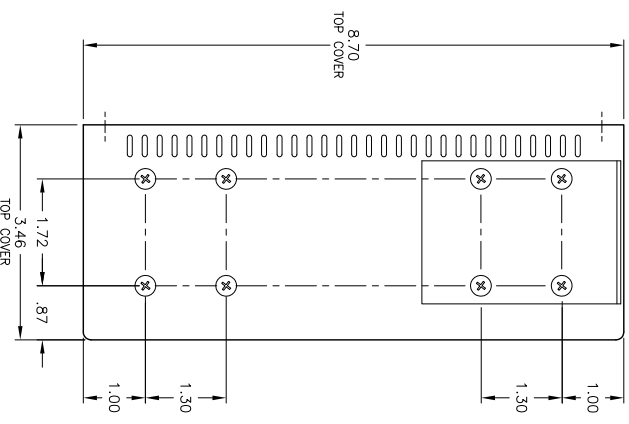
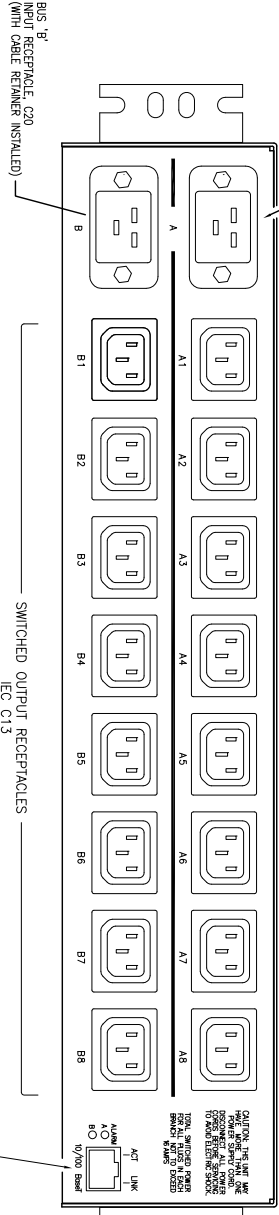
FITS INTO 19" RACK
18.32



TOP VIEW



BACK VIEW



THIS DOCUMENT CONTAINS INFORMATION
REGARDING THE DESIGN, CONSTRUCTION,
OPERATION, MAINTENANCE, REPAIR, AND
REPLACEMENT OF THE PRODUCT. THIS
INFORMATION IS THE PROPERTY OF WESTERN
TELEMETRIC INC. AND IS NOT TO BE
REPRODUCED OR TRANSMITTED IN ANY
FORM OR BY ANY MEANS, ELECTRONIC,
MECHANICAL, PHOTOCOPYING, RECORDING,
OR BY ANY INFORMATION STORAGE AND
RETRIEVAL SYSTEM, WITHOUT THE
WRITTEN PERMISSION OF WESTERN
TELEMETRIC INC.

		Western Telemetric Inc. 6 Years Plus of Service	
TITLE	DIMENSIONAL DRAWING	DATE ISSUED	REV
SCALE	1:1	DATE ISSUED	1
DESIGNED BY	1:1	DATE ISSUED	1
DRAWN BY	1:1	DATE ISSUED	1
CHECKED BY	1:1	DATE ISSUED	1
APPROVED BY	1:1	DATE ISSUED	1
SCALE	1:1	DATE ISSUED	1
WESTERN TELEMETRIC INC. 10/100 Speed		NPS-16HD16-3	